

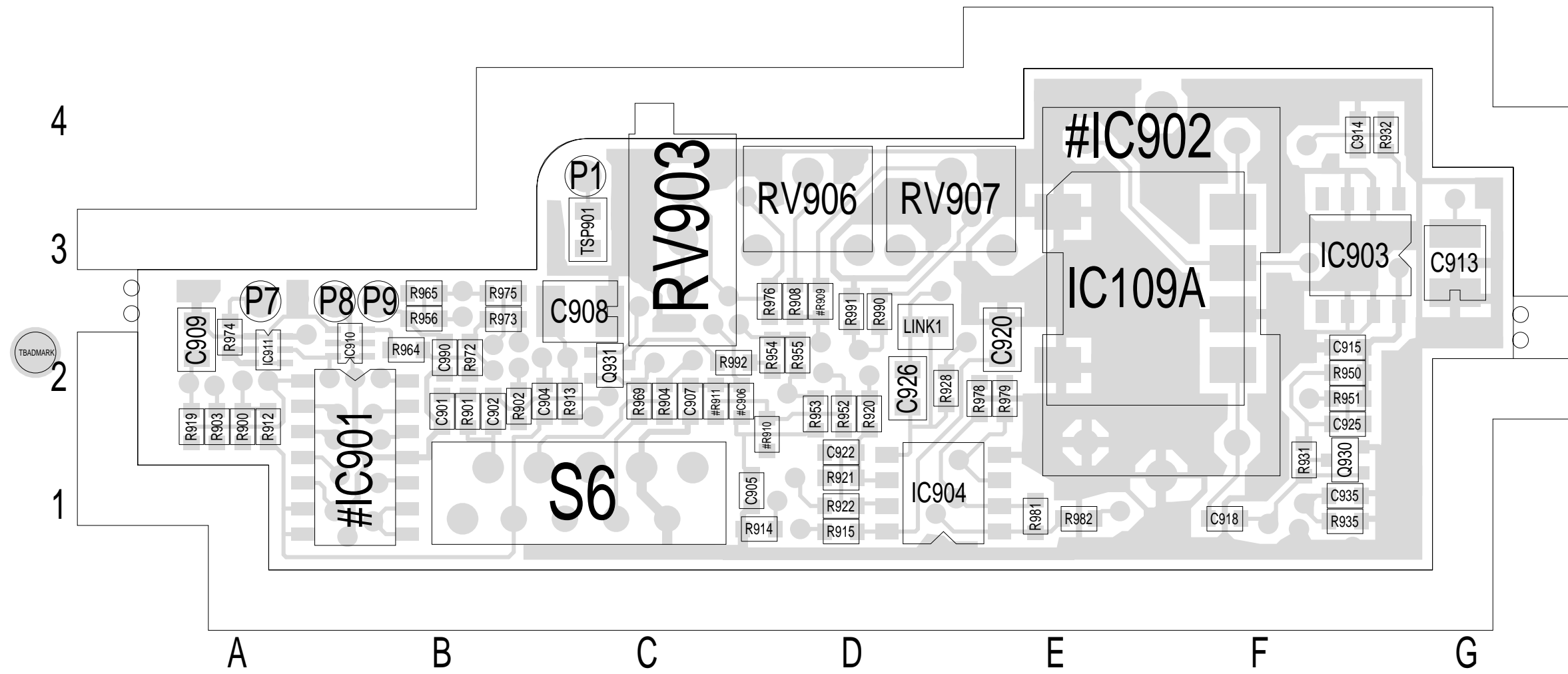
BAND WIDTH	VOLT ON P9	
NB	LOW	0V
WB	HIGH	5V

KHZ	OFFSET	VOLT ON P8
2.5	ON	5V
2.5	OFF	0V

OFFSET	
OFF	2.5V
ON RX	3.16
ON TX	3.28

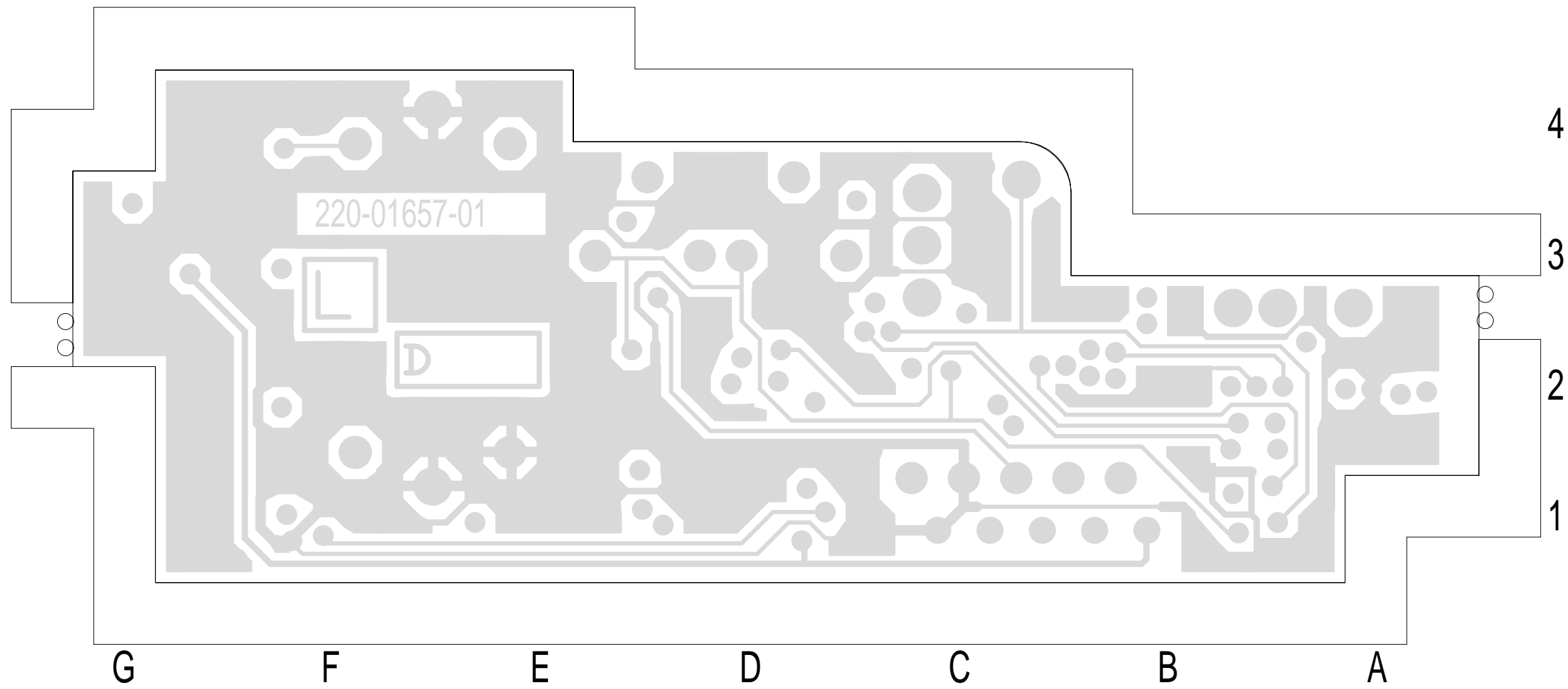
IC109A 1.5PPM STABILITY  
800MHZ/900MHZ OPERATION.  
FOR 6.25KHZ OFFSET ADJUST  
FREQ OFFSET BY +7.76 PPM  
WITH TRIMMER CAP.

FREQ STABILITY	#IC902
3.0 PPM	VTXO 430
2.5 PPM	VTXO 425
2.0 PPM	VTXO 420



TAIT ELECTRONICS	IPN: 220-01657-01	ISS: A	ID: 1.TA	DATE: 31 Aug 2000
T2000 TCXO PCB LAYOUT - TOP SIDE				

Scale:4:1 ; Rotation: 0 degrees



TAIT ELECTRONICS	IPN: 220-01657-01	ISS: A	ID: 4.BA	DATE: 31 Aug 2000
T2000 TCXO PCB LAYOUT - BOTTOM SIDE				

Scale:4:1 ; Rotation: 0 degrees